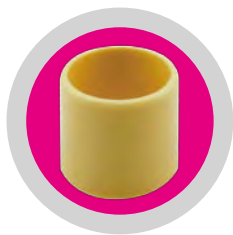


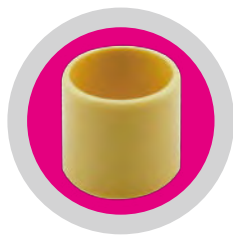
stamid系列滑动轴承—轴套



ST101



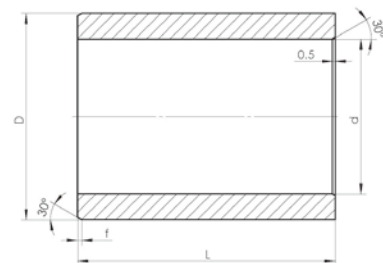
ST102



ST103



ST104



材料	型号	d	d公差 (压入H7孔后)	D	L (h13)
	S-0507-05	5	+0.020 +0.068	7	5
	S-0507-08	5	+0.020 +0.068	7	8
	S-0507-10	5	+0.020 +0.068	7	10
	S-0607-06	6	+0.010 +0.040	7	6
	S-0608-04	6	+0.020 +0.068	8	4
	S-0608-06	6	+0.020 +0.068	8	6
	S-0608-08	6	+0.020 +0.068	8	8
	S-0608-10	6	+0.020 +0.068	8	10
	S-0810-08	8	+0.025 +0.083	10	8
	S-0810-10	8	+0.025 +0.083	10	10
	S-0810-12	8	+0.025 +0.083	10	12
	S-1012-04	10	+0.025 +0.083	12	4
	S-1012-06	10	+0.025 +0.083	12	6
	S-1012-08	10	+0.025 +0.083	12	8
	S-1012-10	10	+0.025 +0.083	12	10
	S-1012-12	10	+0.025 +0.083	12	12
	S-1214-06	12	+0.032 +0.102	14	6
	S-1214-08	12	+0.032 +0.102	14	8
	S-1214-12	12	+0.032 +0.102	14	12
	S-1214-15	12	+0.032 +0.102	14	15
	S-1416-10	14	+0.032 +0.102	16	10
	S-1416-20	14	+0.032 +0.102	16	20
	S-1517-05	15	+0.032 +0.102	17	5
	S-1517-12	15	+0.032 +0.102	17	12
	S-1618-08	16	+0.032 +0.102	18	8
	S-1618-12	16	+0.032 +0.102	18	12
	S-1618-15	16	+0.032 +0.102	18	15
	S-1618-20	16	+0.032 +0.102	18	20
	S-1820-10	18	+0.032 +0.102	20	10
	S-1820-15	18	+0.032 +0.102	20	15
	S-1820-20	18	+0.032 +0.102	20	20
	S-2023-10	20	+0.040 +0.124	23	10
	S-2023-15	20	+0.040 +0.124	23	15
	S-2023-20	20	+0.040 +0.124	23	20
	S-2023-25	20	+0.040 +0.124	23	25
	S-2225-15	22	+0.040 +0.124	25	15
	S-2528-15	25	+0.040 +0.124	28	15
	S-2528-20	25	+0.040 +0.124	28	20
	S-2528-30	25	+0.040 +0.124	28	30
	S-3034-20	30	+0.040 +0.124	34	20
	S-3034-30	30	+0.040 +0.124	34	30
	S-3236-20	32	+0.050 +0.150	36	20
	S-3236-30	32	+0.050 +0.150	36	30
	S-3539-20	35	+0.050 +0.150	39	20
	S-3539-30	35	+0.050 +0.150	39	30
	S-4044-30	40	+0.050 +0.150	44	30
	S-4044-40	40	+0.050 +0.150	44	40
	S-4550-30	45	+0.050 +0.150	50	30
	S-4550-50	45	+0.050 +0.150	50	50

* 更多型号请浏览公司网站，或咨询我们的工程师。



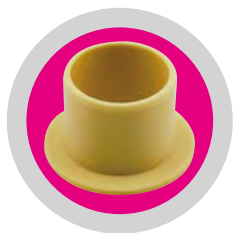
上海简灵机械科技有限公司
 Tel: 021-3132 6508 Fax: 021-5168 5302
 地址: 上海市江场一路18号华瑞大厦822室
 info@simart.com.cn www.simart.com.cn



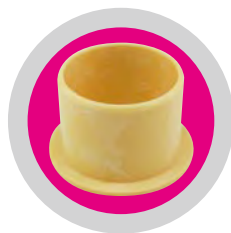
stamid系列滑动轴承—法兰轴承



ST101



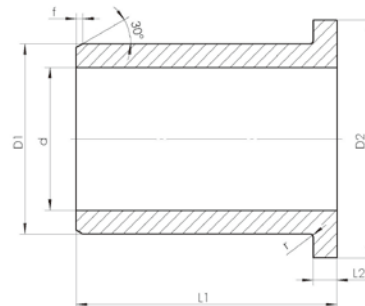
ST102



ST103



ST104



材料	型号	d	d公差 (压入H7孔后)	D1	D2	L1 (h13)	L2 (-0.14)
	F-0507-05	5	+0.020 +0.068	7	11	5	1
	F-0608-04	6	+0.020 +0.068	8	12	4	1
	F-0608-06	6	+0.020 +0.068	8	12	6	1
	F-0608-08	6	+0.020 +0.068	8	12	8	1
	F-0608-10	6	+0.020 +0.068	8	12	10	1
	F-0708-08	7	+0.013 +0.049	8	12	8	0.5
	F-0810-04	8	+0.025 +0.083	10	15	4	1
	F-0810-07	8	+0.025 +0.083	10	15	7	1
	F-0810-10	8	+0.025 +0.083	10	15	10	1
	F-0810-15	8	+0.025 +0.083	10	15	15	1
	F-1012-06	10	+0.025 +0.083	12	18	6	1
	F-1012-09	10	+0.025 +0.083	12	18	9	1
	F-1012-10	10	+0.025 +0.083	12	18	10	1
	F-1012-12	10	+0.025 +0.083	12	18	12	1
	F-1012-17	10	+0.025 +0.083	12	18	17	1
	F-1214-07	12	+0.032 +0.102	14	20	7	1
	F-1214-09	12	+0.032 +0.102	14	20	9	1
	F-1214-12	12	+0.032 +0.102	14	20	12	1
	F-1214-15	12	+0.032 +0.102	14	20	15	1
	F-1214-20	12	+0.032 +0.102	14	20	20	1
	F-1416-06	14	+0.032 +0.102	16	22	6	1
	F-1416-12	14	+0.032 +0.102	16	22	12	1
	F-1416-17	14	+0.032 +0.102	16	22	17	1
	F-1517-05	15	+0.032 +0.102	17	23	5	1
	F-1517-17	15	+0.032 +0.102	17	23	17	1
	F-1517-20	15	+0.032 +0.102	17	23	20	1
	F-1618-09	16	+0.032 +0.102	18	24	9	1
	F-1618-12	16	+0.032 +0.102	18	24	12	1
	F-1820-12	18	+0.032 +0.102	20	26	12	1
	F-1820-22	18	+0.032 +0.102	20	26	22	1
	F-2023-11	20	+0.040 +0.124	23	30	11.5	1.5
	F-2023-16	20	+0.040 +0.124	23	30	16.5	1.5
	F-2023-21	20	+0.040 +0.124	23	30	21.5	1.5
	F-2528-16	25	+0.040 +0.124	28	35	16.5	1.5
	F-2528-21	25	+0.040 +0.124	28	35	21.5	1.5
	F-3034-16	30	+0.040 +0.124	34	42	16	2
	F-3034-20	30	+0.040 +0.124	34	42	20	2
	F-3236-16	32	+0.050 +0.150	36	40	16	2
	F-3236-26	32	+0.050 +0.150	36	40	26	2
	F-3539-12	35	+0.050 +0.150	39	47	12	2
	F-3539-26	35	+0.050 +0.150	39	47	26	2
	F-4044-14	40	+0.050 +0.150	44	52	14	2
	F-4044-30	40	+0.050 +0.150	44	52	30	2
	F-4550-30	45	+0.050 +0.150	50	58	30	2
	F-4550-50	45	+0.050 +0.150	50	58	50	2

* 更多型号请浏览公司网站，或咨询我们的工程师。



上海简灵机械科技有限公司
 Tel: 021-3132 6508 Fax: 021-5168 5302
 地址: 上海市江场一路18号华瑞大厦822室
 info@simart.com.cn www.simart.com.cn

